

DIARY DATES

Wednesday 25th December Christmas Day
Happy Christmas from the St Matthew's Family!

Monday 6th January 2025 INSET Day

Tuesday 7th January Term 3 starts and we welcome all the children back to school

Tuesday 11th January Key Stage Two Choir starts. A letter inviting key stage two pupils to school choir will be sent in the first week. We are so proud of all that our school choir achieved in the Autumn term. Thank you to all of our choir members!

Upcoming Events

Year 6 Junior Citizenship Workshop

PTA

The PTA would like to thank everyone for their help and support this year. These events couldn't happen without you. We really appreciate the time you give up to help us.

We have raised a fantastic sum of money for the school.
Merry Christmas and a Happy New Year from us all.

ACHIEVING

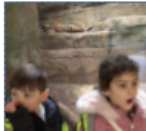
We had a huge number of children achieving their gold behaviour certificates! So our congratulations go to the following:

Early Years Loui Curran Ayaan Ky'an Rym Adam
Matthew Ralph Lyra Ra'mhi Arlette Deon Elizabeth Ace
Year 1 Lennie David Zainab Janine
Year 3 Lola Sasha Tyson Kathleen Toni Ashley Stefan
Keilah Eliaz Ratu Kayden
Year 4 Leona Malachi Noah Akira Caelen Ariel Marina
Year 5 Louis-James Taomi Santiago Esther Zeffie Allyisa
Malik Haris Rodina Kendhi
Year 6 Ilhan Lottie-Rose Tyler



BELIEVING

Year 1 pupils had a wonderful Christmas trip to London Zoo where they actually met Father Christmas! He's not all they met... look closely!



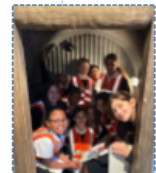
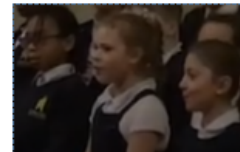
IMPERIAL WAR MUSEUM

Year 6 had an incredible trip to the Imperial War Museum, where they increased their knowledge and understanding of the experiences of people living through and /or fighting during World Wars I and II.



BELONGING

The Early Years and Key Stage One Nativity, along with the Key Stage Two Poetry & Carols in St Matthew's Church, showed how we all belong to our wonderful school.



ATTENDANCE

There is now new statutory guidance from the DfE for schools around attendance this year. If attendance falls below 90%, this is looked into and a penalty notice could be issued without warning. This is 5 days of absence within 10 weeks. These notices are not issued by school but by the local authority.



Class teacher

Contact point 1.
for any concerns or queries



Head of School

Contact point 2.
for any significant concerns or queries outside of the classroom OR for SEND support



EHT

Contact point 3.
Heads of School will provide information to the EHT if support is required or there has been a formal complaint.

Contact Points