

### DIARY DATES

#### Monday 13th May

SATs Week for Year 6  
SATs Breakfast Club Monday to Thursday  
Mental Health Awareness Week

#### Thursday 16th May Coffee Morning

**Wednesday 22nd May** Key Stage 1 & Key Stage 2 Movie Afternoon

**Friday 24th May** Last day of Term 5

**Monday 3rd June** INSET Day school closed

**Tuesday 4th June** Term 6 starts

#### Trips and other events:

Year 5 School Journey to Sayers Croft  
Year 2 National Army Museum  
Reception London Central Mosque Trust & The Islamic Cultural Centre  
Nursery Farm Trip  
PTA Father's Day Event

### PTA

**KS1 & KS2 Movie**  
**Afternoon on Wednesday**  
**22nd May from 3.30-5pm**

Upcoming...

**Father's Day** event Friday  
14th June. Watch this space  
for more details.



### Mental Health Awareness Week

We will be collecting donations for the 'Tell a Joke' week on **Monday 13th May**.

### COFFEE MORNINGS

All parents and carers are very welcome to join our Thursday coffee mornings from 9-9.30 in the school hall:

**Thursday 16th May** Managing Challenging Behaviour at Home MIND.

### BELONGING

As SATs Week approaches, we want to wish all our Year 6 pupils the very best for next week. They are showing a great sense of belonging to St Matthew's by living our vision daily. They have been working so hard, as has Mrs Marshall. Good luck, Year 6!

### BELIEVING

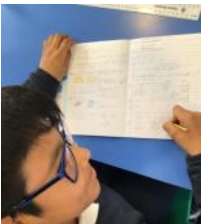
William, in Year 6, showed fabulous self-belief when he created a wonderful piece of art for Skanska's Building Our Future art competition. It will now be showcased on a 80-meter crane at the 105VS site. Will added solar panels as he feels they are integral to the future. Congratulations, Will!



### ACHIEVING

Congratulations go to the following Nursery children for achieving their gold certificates: Matthew, Lyra, Ralph, Rasha and True! Congratulations also go to Tyson in Year Two!

**Good luck**



Class teacher

**Contact point 1.**  
for any concerns or queries



Head of School

**Contact point 2.**  
for any significant concerns or queries outside of the classroom OR for SEND support



EHT

**Contact point 3.**  
Heads of School will provide information to the EHT if support is required or there has been a formal complaint.

**Contact Points**